



ecomaine 101:
Learn where "away" really is!

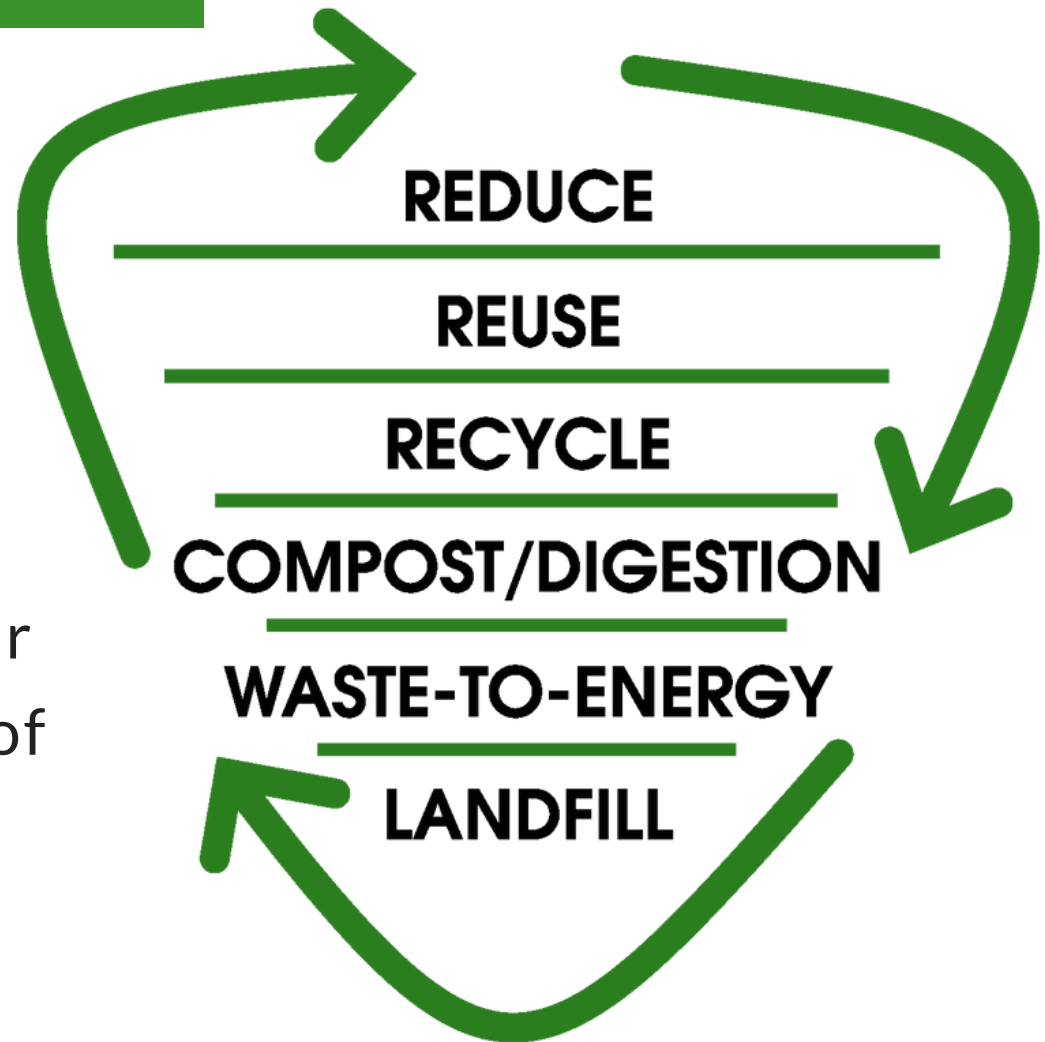


Who is ecomaine?

ecomaine is a 501(c)3 nonprofit organization owned by 20 Maine municipalities to manage municipal solid waste (MSW) and recycling.

The Waste Hierarchy

"ecomaine provides comprehensive long-term solid waste solutions in a safe, environmentally-responsible, economically-sound manner and is a leader in raising public awareness of sustainable waste management strategies."



The Timeline of our Trash.

1976-1978

Portland, South Portland, Scarborough, and Cape Elizabeth trade in their municipal landfills and establish Regional Waste Systems (RWS) with 240 acres of jointly-owned landfill.

1985 - 1988

RWS expands service to more than 20 municipalities. In a growing partnership, these communities built a waste-to-energy facility to reduce landfilling and generate renewable energy from discarded waste.

1990-2005

The former transfer station used to consolidate waste, including the original trash baler, was transformed to process recyclables. RWS begins to accept household paper, glass, metals, and other materials for recycling.

2006 - PRESENT

Under a new name, RWS establishes ecomaine and Maine's first Single-Sort program, making recycling easier for residents and recovering more tonnage than ever. Member communities grow in numbers to include more than 65 municipalities from Andover and Fryeburg to Kittery and Lamoine

What does ecomaine do?

We have three facilities that help us manage discarded materials from nearly 1/3 of Maine residents. We accept more than 175,000 tons of trash and 35,000 tons of recycling each year.



Recycling

What does ecomaine do?

We have three facilities that help us manage discarded materials from nearly 1/3 of Maine residents. We accept more than 175,000 tons of trash and 35,000 tons of recycling each year.



Waste-to-Energy



Recycling

What does ecomaine do?

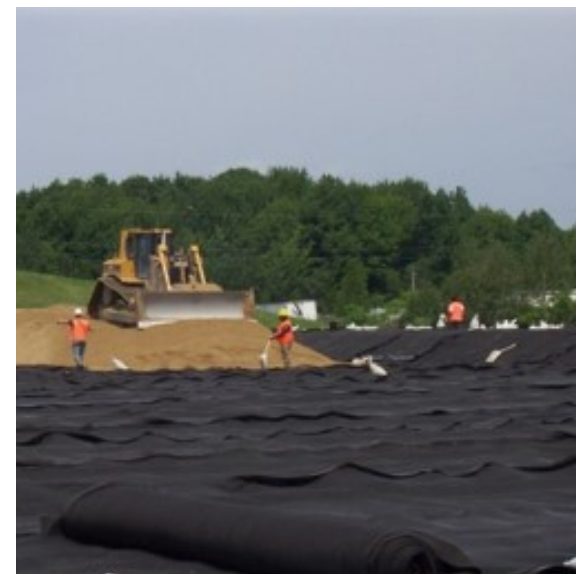
We have three facilities that help us manage discarded materials from nearly 1/3 of Maine residents. We accept more than 175,000 tons of trash and 35,000 tons of recycling each year.



Waste-to-Energy






Recycling



Ashfill/ Landfill



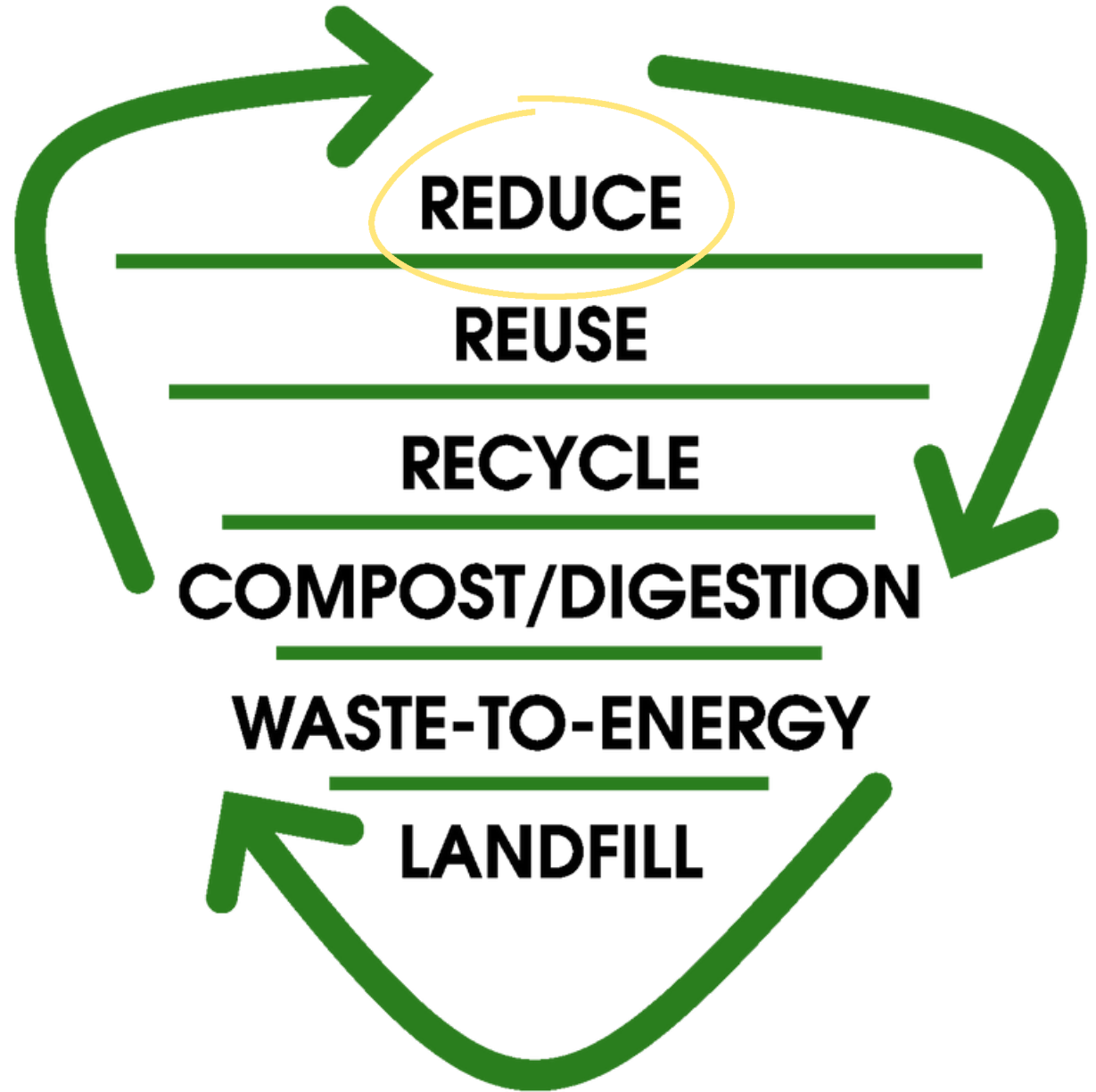
-  Owner Member Community
-  Associate Member Community
-  Contract Member Community

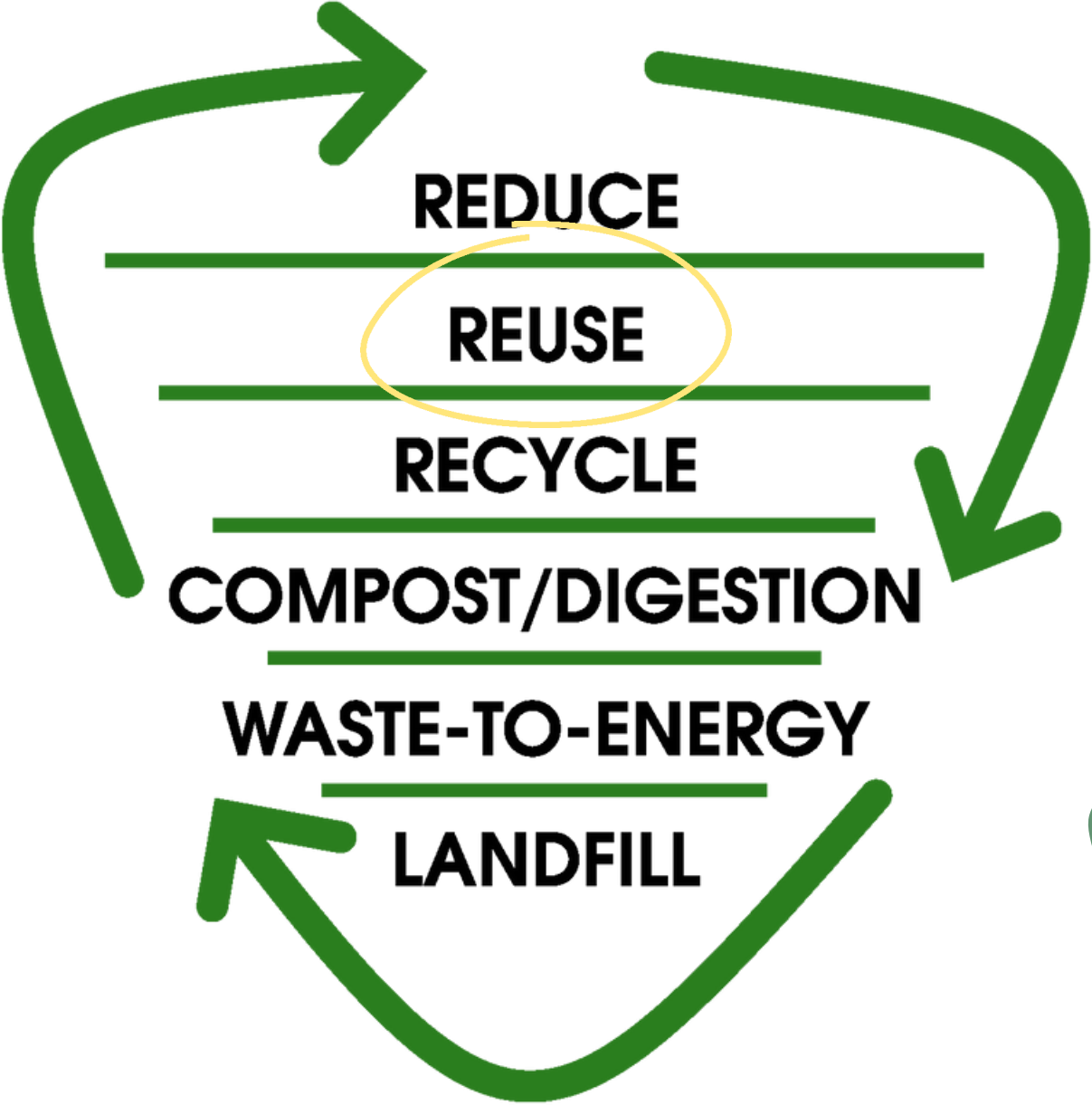
ecomaine

Less filling.



What can we
do to reduce
waste?





Single-Use



How Our Single-Sort Recycling Works



ecomaine



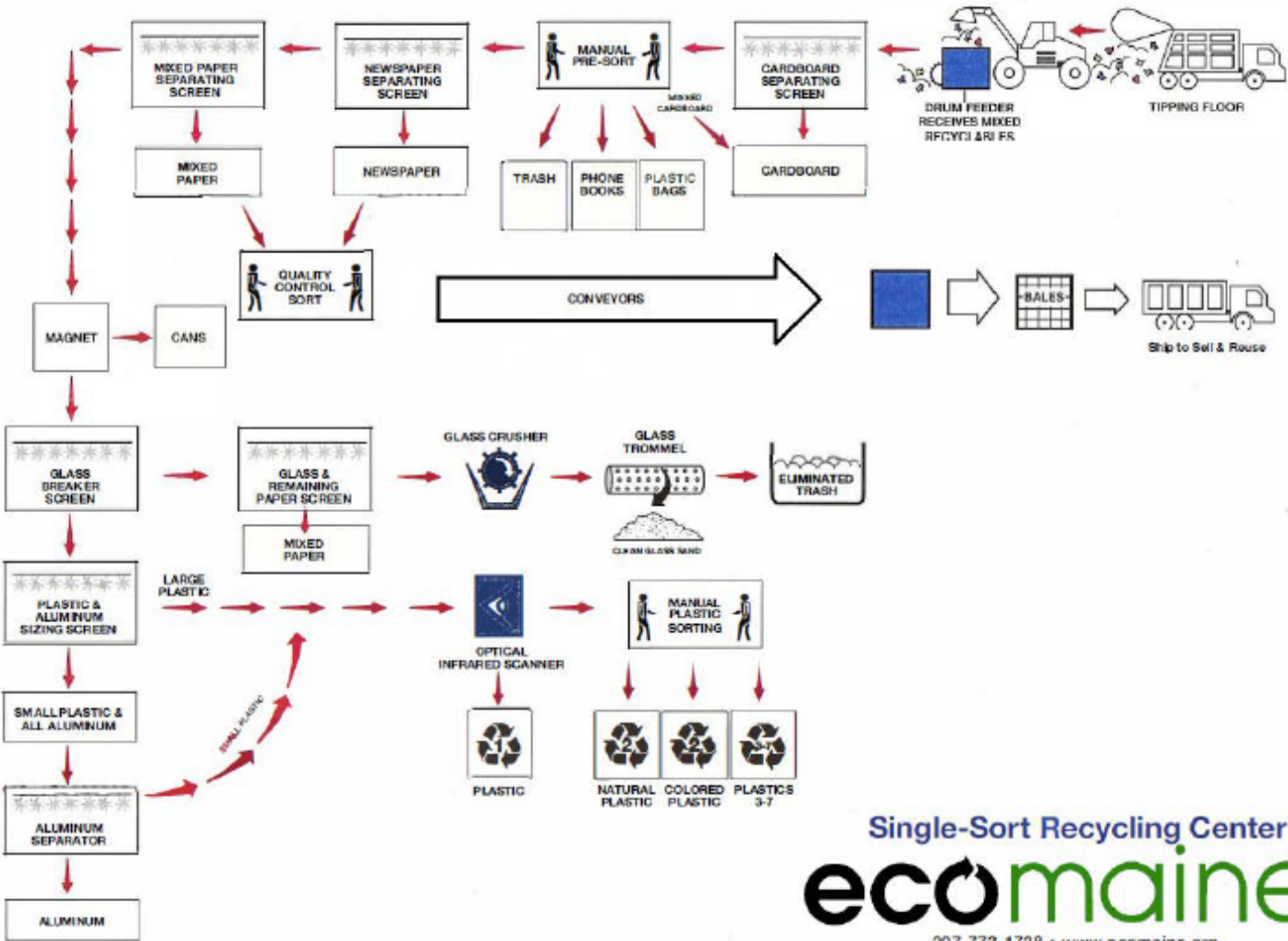
Paper

Cardboard

Metal

Plastics #1-7

Glass



Single-Sort Recycling Center
ecomaine

207-773-1738 • www.ecomaine.org

PRINTED ON 100% POST-CONSUMER RECYCLED PAPER

How Our Single-Sort Recycling Works



Paper

Plastics #1-7

Cardboard

Glass

Metal

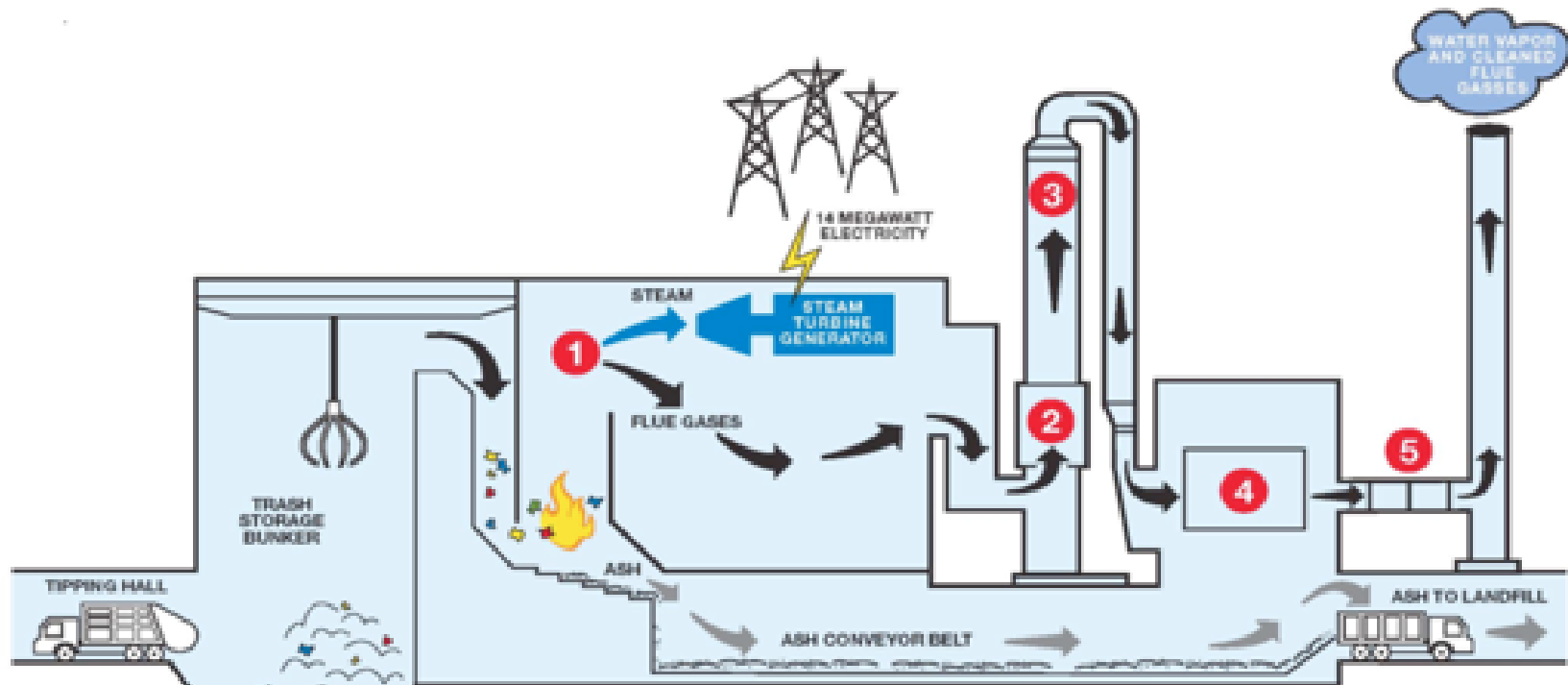
From Trash to Treasure

Recycle these... Create these...



Food is not trash



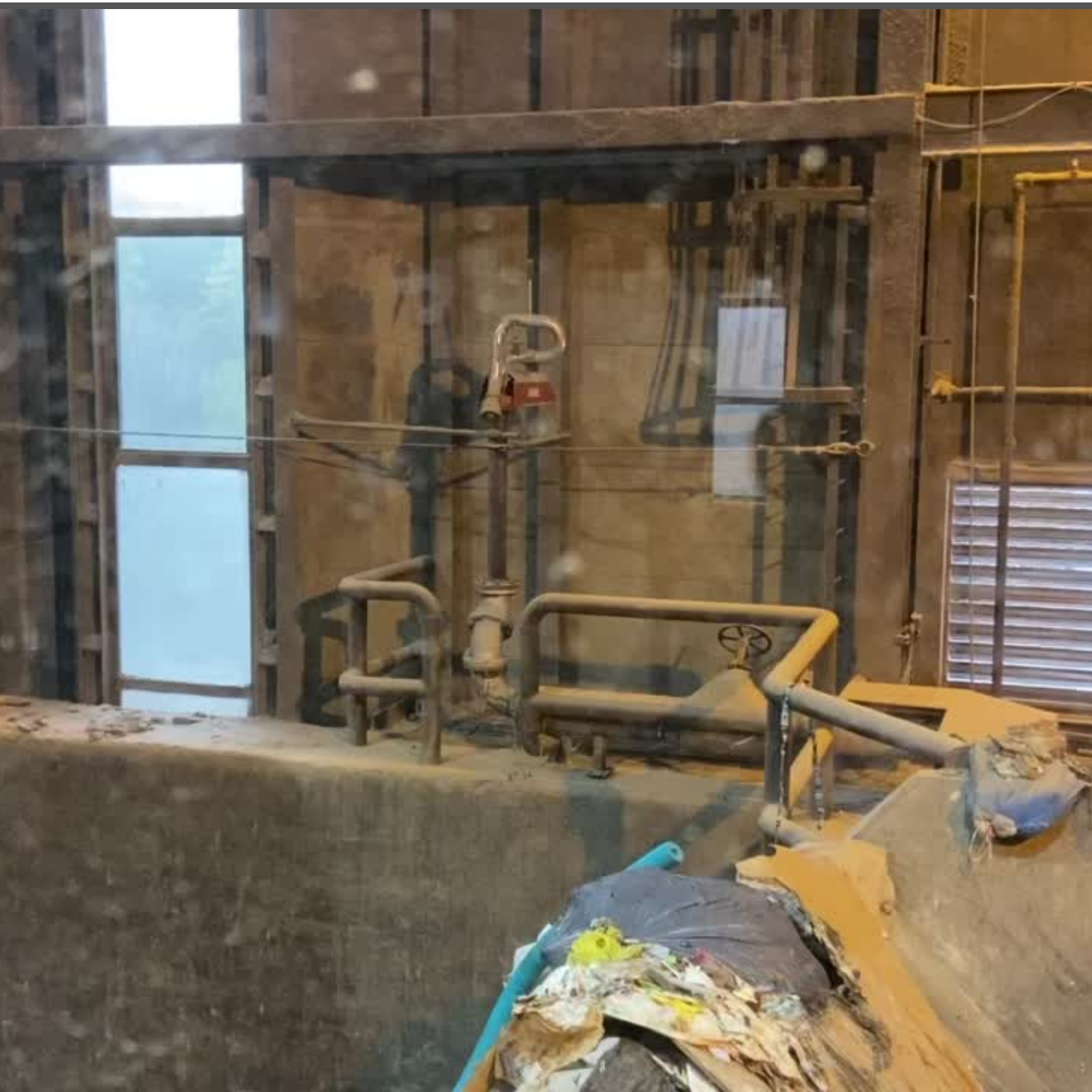


POLLUTION CONTROL SYSTEM



Waste-to-Energy

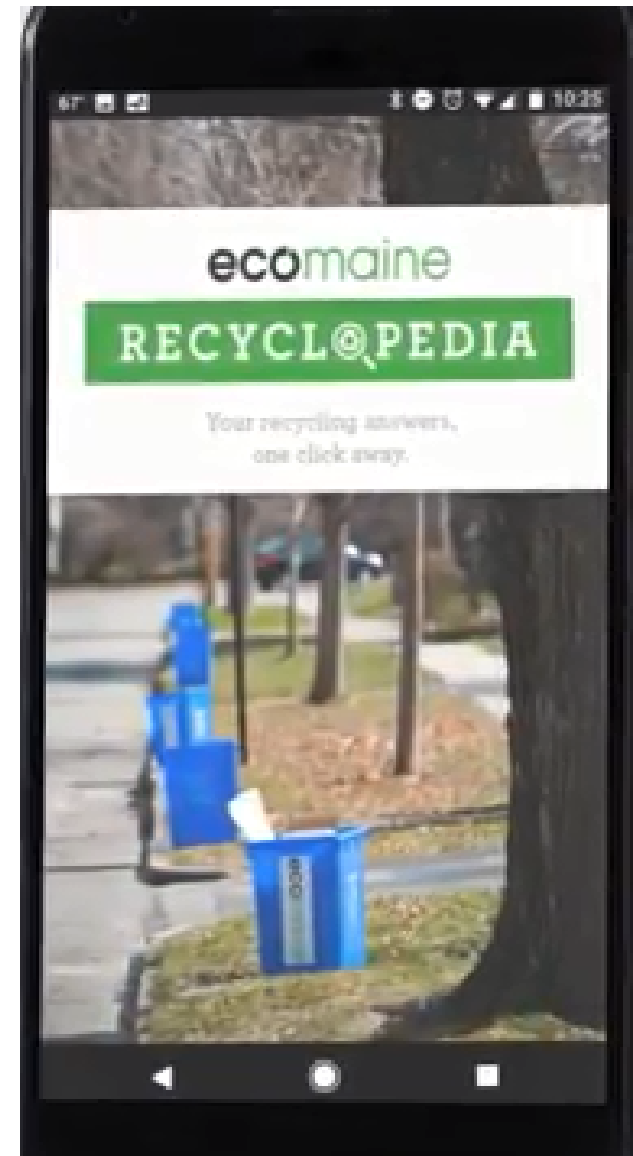
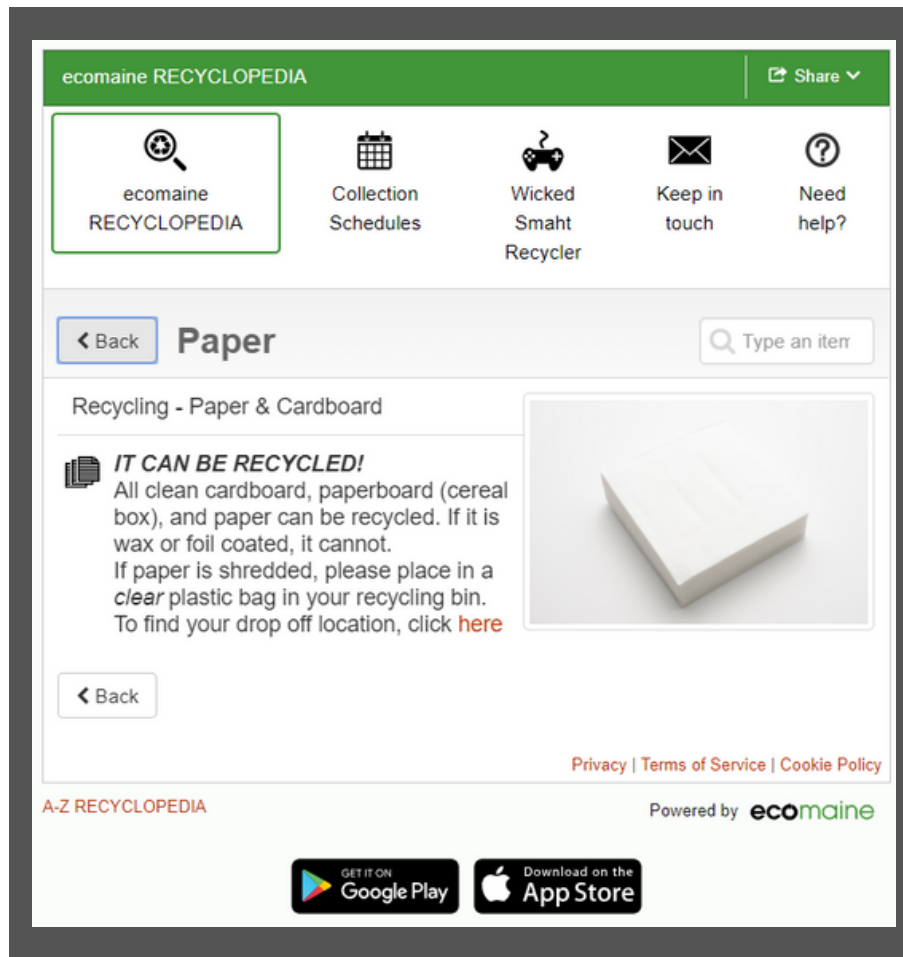
- 90% reduction of trash volume
- Power generation
- Pollution control



Waste to Energy



Which bin does it go in?



ecomaine

THANK
YOU!





Contact Us

Email

INFO@ECOMAINE.ORG

Phone

207 773 1738

Social Media

 **@ECO_MAINE**

 **LINKEDIN.COM/COMPANY/
ECOMAINE**

 **FACEBOOK.COM/ECOMAINE**

